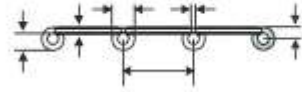
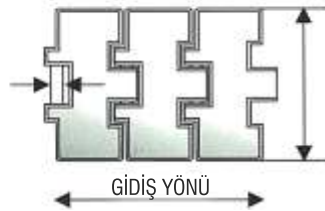
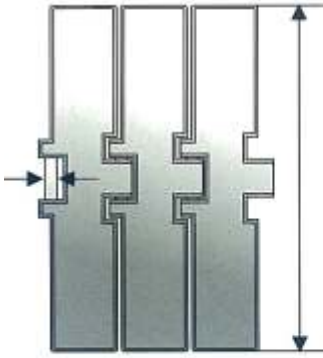


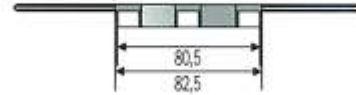
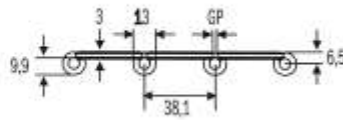
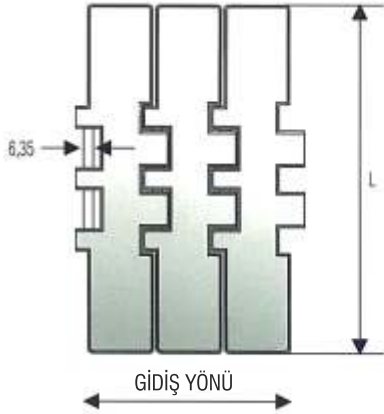
**DÜZ GİDİŞLİ AISI 430**

**ÇELİK BANT**

**SS 812**



KOD	L (mm)	Sertlik (HRC)	GP (mm)	RRC(mm)
SS 812 K 325	82,5	20	1,6	150
SS 812 K350	88,9	20	2,8	75
SS 812 K400	101,6	20	1,6	150
SS 812 K450	114,3	20	1,6	150
SS 812 K600	152,4	20	1,6	150
SS 812 K750	190,5	20	1,6	150

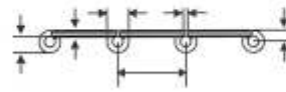
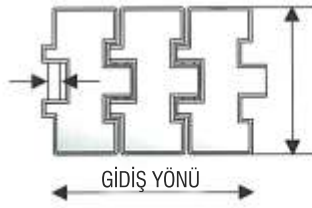
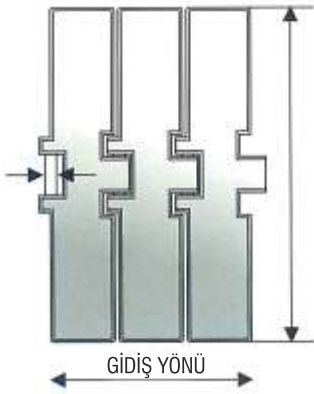


KOD	L (mm)	Sertlik (HRC)	GP (mm)	RRC(mm)
SS 802 K750	190,5	20	1,6	150

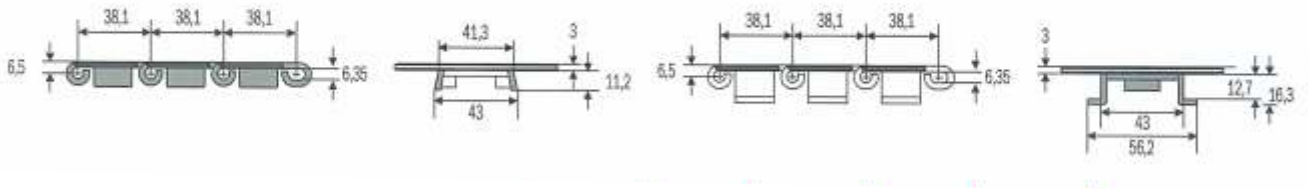
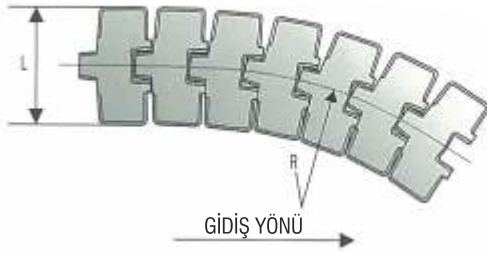
**DÜZ GİDİŞLİ AISI 304**

**ÇELİK BANT**

**SSA 815**



KOD	L (mm)	Sertlik (HRC)	GP (mm)	RRC(mm)
SSA 815 K325	82,5	26	1,6	150
SSA 815 K350	88,9	26	1,6	150
SSA 815 K400	101,6	26	1,6	150
SSA 815 K450	114,3	26	1,6	150
SSA 815 K600	152,4	26	1,6	150
SSA 815 K750	190,5	26	1,6	150



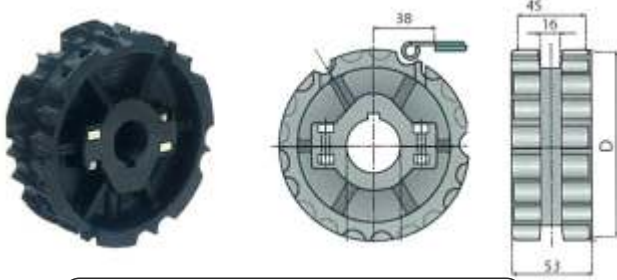
KOD	L (mm)	R (mm)
SS 881 TAB K325	82,5	457
SS 881 TAB K450	114,3	500
SS 881 TAB K750	190,5	500

**ASETAL & ÇELİK BANT**

**TAHRİK DİŞLİ GRUBU**

**DÜZ ASETAL İÇİN (820)**

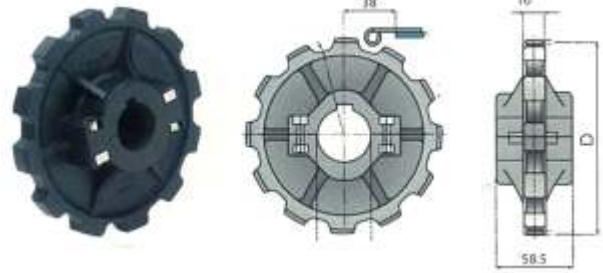
Z17-Z19-Z21-Z23-Z25



Diş Sayısı	Göbek (mm)	Çap D (mm)
Z 17	25-30	104
Z 19	25-30	117
Z 21	25-30	129
Z 23	25-30	141
Z 25	25-30	153

**DÖNÜŞLÜ ASETAL İÇİN (880-882-880BO-880 M)**

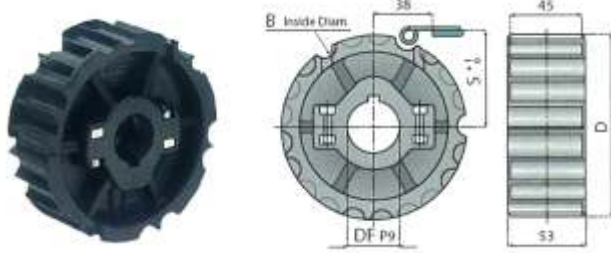
Z8-Z9-Z10-Z12



Diş Sayısı	Göbek (mm)	Çap D (mm)
Z 8	25	134
Z 9	25	111
Z 10	25	123
Z 12	25	147

**DÜZ PASLANMAZ İÇİN (812-SSA 815)**

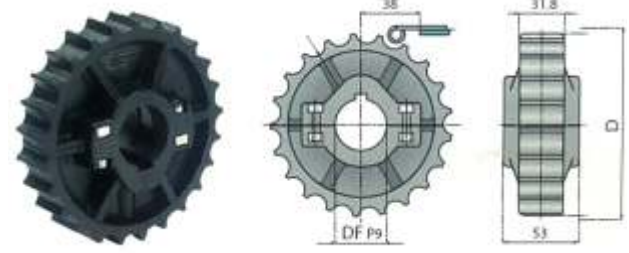
Z19-Z21-Z23-Z25



Diş Sayısı	Göbek (mm)	Çap D (mm)
Z 19	25	117
Z 21	25-30	129
Z 23	25 -30	141
Z 25	25 -30	153

**DÖNÜŞLÜ PASLANMAZ İÇİN (SS 881 TAB)**

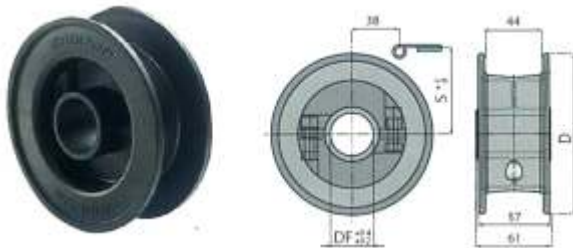
Z21-Z23-Z25



Diş Sayısı	Göbek (mm)	Çap D (mm)
Z 21	25-30	129
Z 23	25 -30	141
Z 25	25 -30	153

**AVARE**

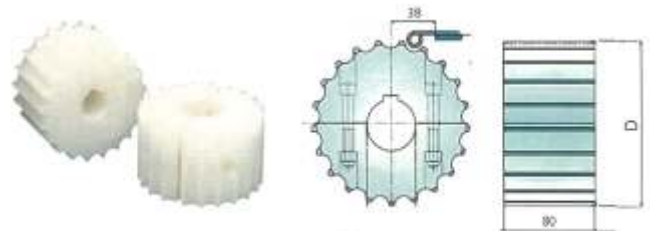
Z21-Z23-Z25



Diş Sayısı	Göbek (mm)	Çap D (mm)
Z 21	25-30	129
Z 23	25 -30	141
Z 25	25 -30	153

**ÇİFT MENTEŞELİ İÇİN (821-SS 802)**

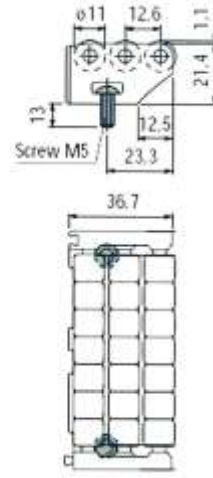
Z21



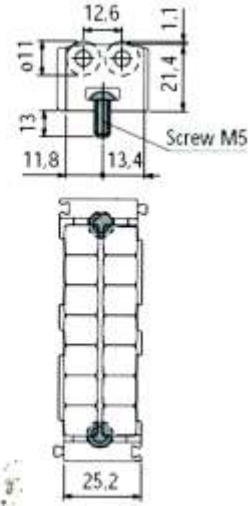
Diş Sayısı	Göbek (mm)	Çap D (mm)
Z 21	25	129



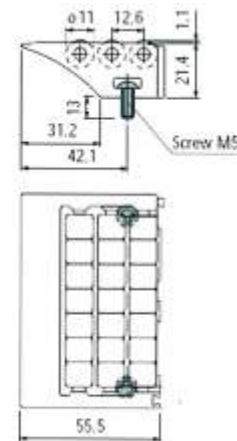
**ATLAMA MAKARASI 85 mm - 115 mm**



**ATLAMA MAKARASI 85 mm - 115 mm**

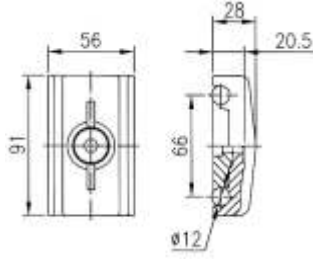


**ATLAMA MAKARASI 85 mm - 115 mm**



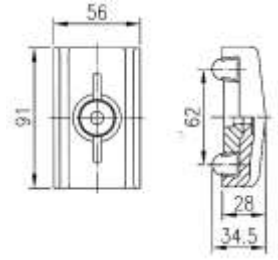
## KONVEYÖR AKSESUARLARI

### KONSOL MENGENE TAKIMI (İKİLİ)



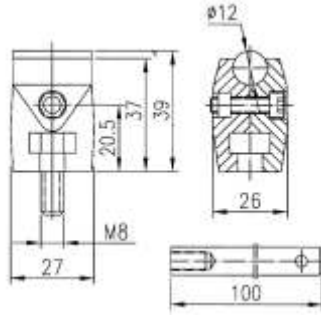
Kod	Tip	Malzeme	Ölçü
YY-C501	Konsol Mengene Takımı (2'li)	Güçlendirilmiş Polyamid Paslanmaz Vida Somun	M8x15Lx100L

### KONSOL MENGENE TAKIMI BALIKSIRTI (İKİLİ)



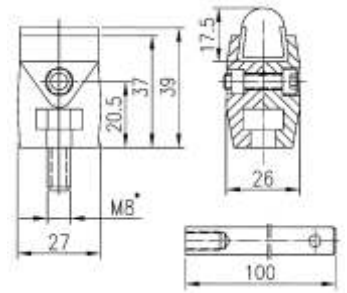
Kod	Tip	Malzeme	Ölçü
YY-C502	Konsol Mengene Takımı (2'li) Balıksırtı	Güçlendirilmiş Polyamid Paslanmaz Vida Somun	M8x15Lx100L

### TEKLİ MİL TUTUCU / MİLLİ



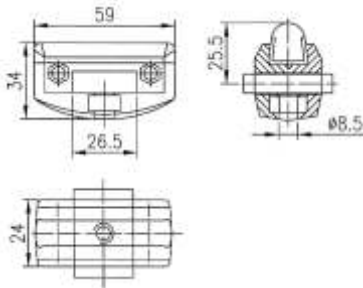
Kod	Tip	Malzeme	Ölçü
YY-C503	Tekli Mil Tutucu Milli	Güçlendirilmiş Polyamid Paslanmaz Vida Somun	M8x15Lx100L

### TEKLİ D TUTUCU / MİLLİ



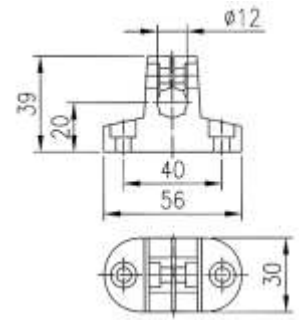
Kod	Tip	Malzeme	Ölçü
YY-C504	Tekli D Tutucu Milli	Güçlendirilmiş Polyamid Paslanmaz Vida Somun	M8x15Lx100L

### TEKLİ D TUTUCU



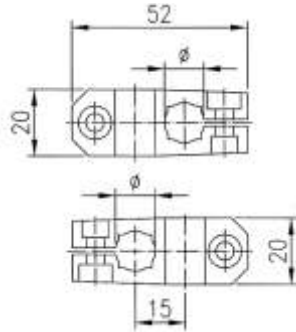
Kod	Tip	Malzeme	Ölçü
YY-C506	Tekli D Tutucu	Güçlendirilmiş Polyamid Paslanmaz Vida Somun	

### T Tip Tutucu T TIP TUTUCU



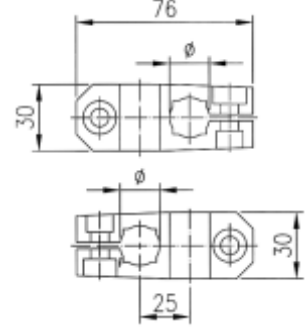
Kod	Tip	Malzeme	Delik Çapı
YY-C507	T Tip Tutucu	Güçlendirilmiş Polyamid Paslanmaz Vida Somun	Ø 12

**FOTOSEL ÇAPRAZ TUTUCU**



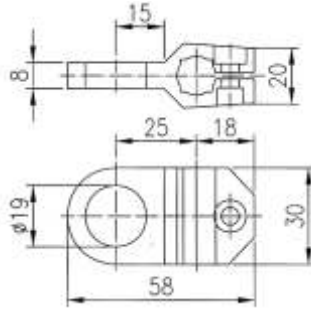
Kod	Tip	Malzeme	Ölçü
YY-C508	Fotosel Çapraz Tutucu	Güçlendirilmiş Polyamid Paslanmaz Vida Somun	Ø 12

**GENİŞ FOTOSEL ÇAPRAZ TUTUCU**



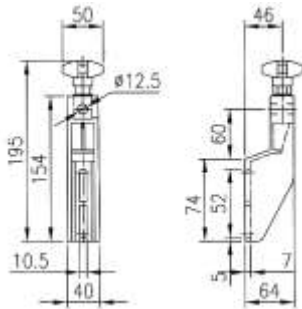
Kod	Tip	Malzeme	Delik Çapı
YY-C509	Geniş Fotosel Çapraz Tutucu	Güçlendirilmiş Polyamid Paslanmaz Vida Somun	Ø 12 Ø 16

**FOTOSEL TUTUCU**



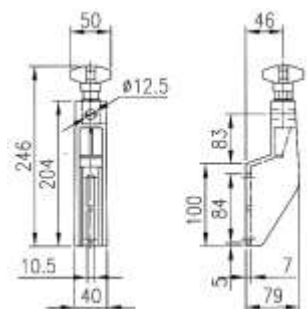
Kod	Tip	Malzeme	Ölçü
YY-C510	Fotosel Tutucu	Güçlendirilmiş Polyamid Paslanmaz Vida Somun	Ø 12

**ORTA BOY KONSOL TAKIMI**



Kod	Tip	Malzeme
YY-B662	Orta Boy	Siyah Polyamid Paslanmaz Yüslük konsol mengersi

**BÜYÜK BOY KONSOL TAKIMI**

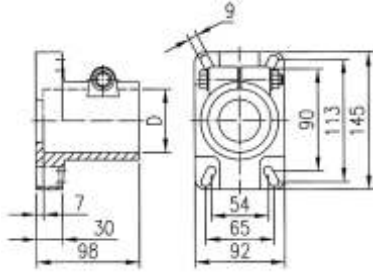


Kod	Tip	Malzeme
YY-B664	Orta Boy	Siyah Polyamid Paslanmaz Yüslük konsol mengersi



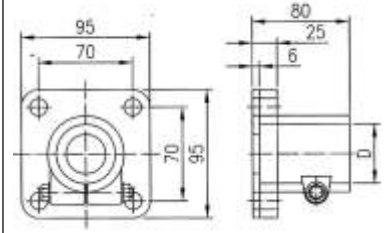
## KONVEYÖR AKSESUARLARI

### GÖVDE BAĞLANTI TAKOZU / BÜYÜK



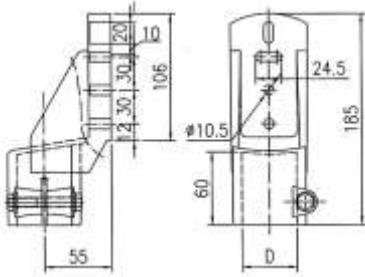
Kod	Tip	Malzeme	Ölçü
YY-E750	Gövde Bağlantı Takozu	Güçlendirilmiş Polyamid	Ø 48.3

### GÖVDE BAĞLANTI TAKOZU / KÜÇÜK



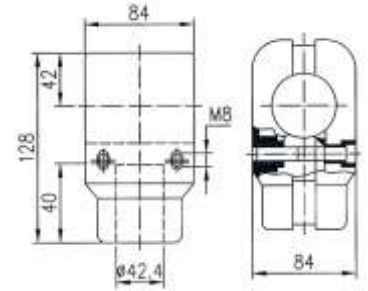
Kod	Tip	Malzeme	Ölçü
YY-E751	Bağlantı Takozu	Güçlendirilmiş Polyamid	Ø 48.3

### YAN BAĞLANTI TAKOZU

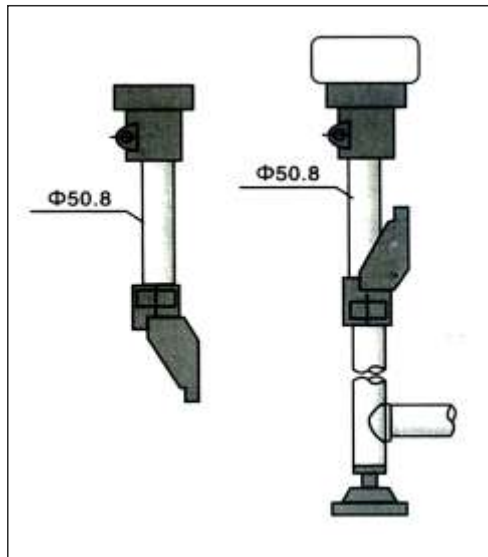


Kod	Tip	Malzeme	Ölçü
YY-E753	Yan Bağlantı Takozu	Güçlendirilmiş Polyamid	Ø 48.3

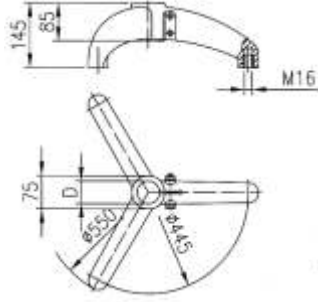
### BAĞLANTI TAKOZU



Kod	Tip	Malzeme	Ölçü
YY-E752-S	Bağlantı Takozu	Güçlendirilmiş Polyamid	Ø 48.3

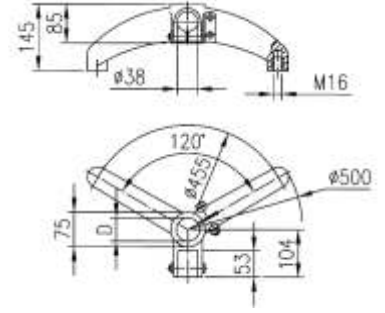


**3' LÜ AYAK**



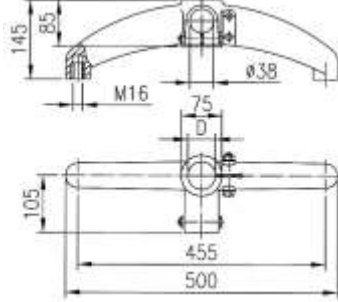
KOD	Tip	Malzeme	D (mm)
YY-E755	3'lü Ayak	Güçlendirilmiş Polyamid	Ø 48.3
		SS Bağlantı	Ø 50.9
		Ekipmanları	Ø 60.3

**120° AÇILI 2' Lİ AYAK**

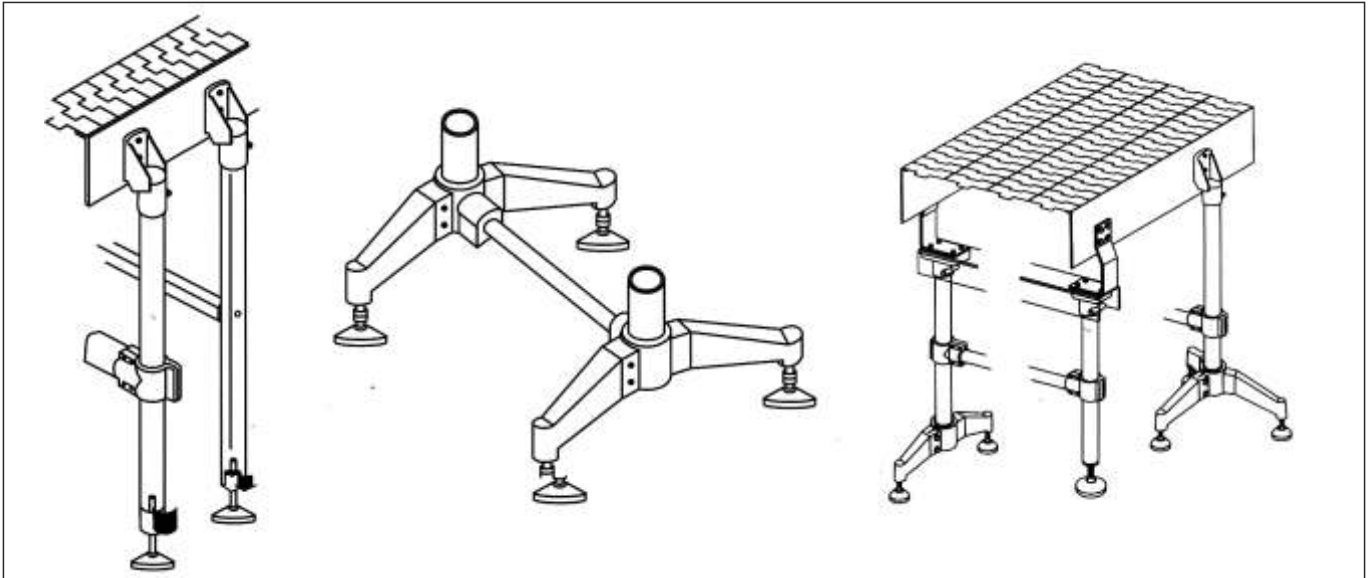


KOD	Tip	Malzeme	D (mm)
YY-E756	2'li Ayak	Güçlendirilmiş Polyamid	Ø 48.3
		SS Bağlantı	
		Ekipmanları	

**180° AÇISIZ 2' Lİ AYAK**

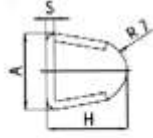


KOD	Tip	Malzeme	D (mm)
YY-E757	2'li Ayak	Güçlendirilmiş Polyamid	Ø 48.3
		SS Bağlantı	
		Ekipmanları	

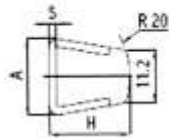
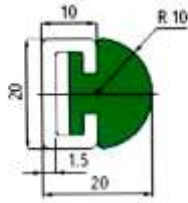


## KONVEYÖR AKSESUARLARI

### ÇEŞİTLİ YAN BARIYERLER



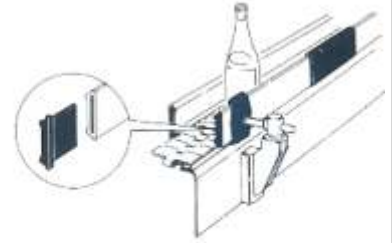
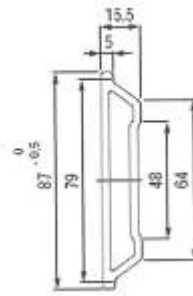
S	H	A
1.5	17.5	16.5
2	18	17



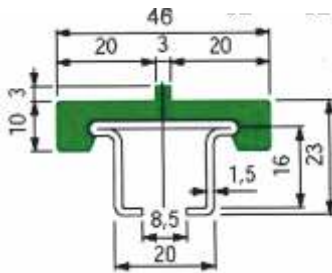
S	H	A
1.5	17.5	16.5
2	18	17



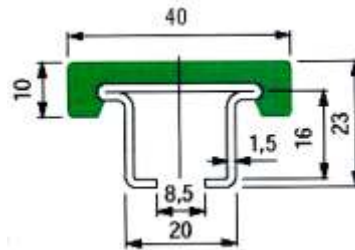
### GENİŞ SİYAH YAN BARIYER

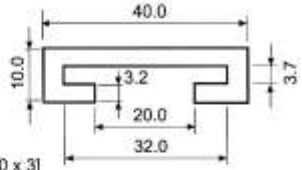
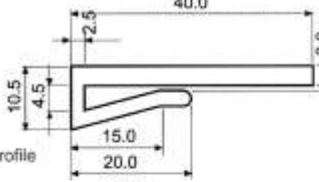
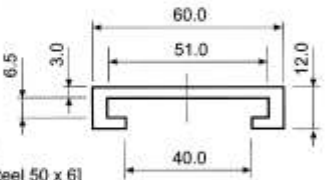
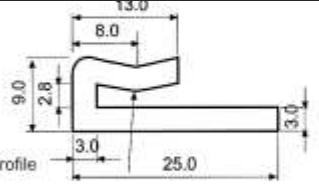
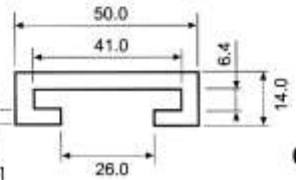
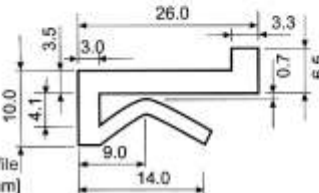
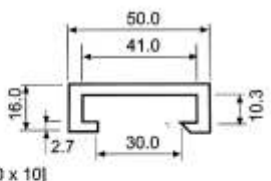
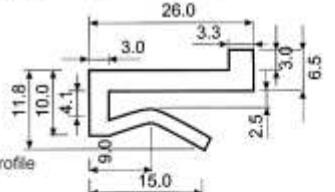
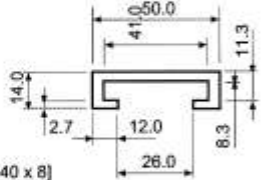
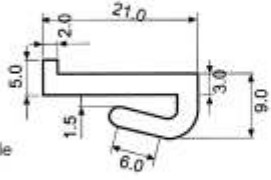
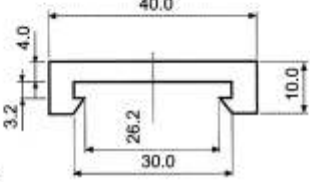
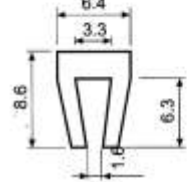
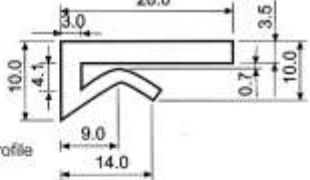
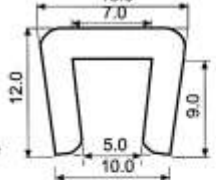
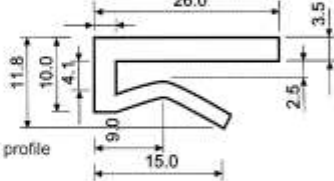
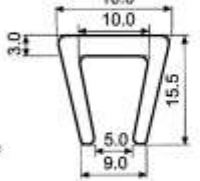
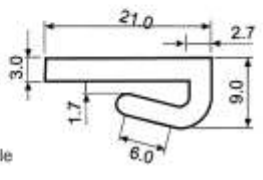


### TIRNAKLI ZİNCİR KILAVUZ PROFİLİ



### TIRNAKSIZ ZİNCİR KILAVUZ PROFİLİ



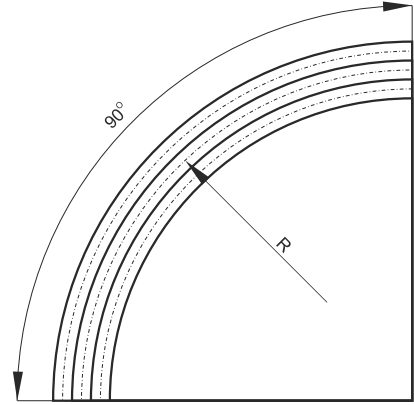
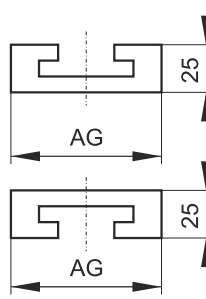
<p>3 m 6 m</p>  <p>C profile [for flat steel 30 x 3]</p> <p><b>C1</b></p>	<p>50</p>  <p>Flat clamp profile</p> <p><b>B19</b></p>
<p>3 m 3 m</p>  <p>C profile [for flat steel 50 x 6]</p> <p><b>C4</b></p>	<p>50</p>  <p>Flat clamp profile</p> <p><b>B21</b></p>
<p>3 m</p>  <p>C profile [for flat steel 40 x 6]</p> <p><b>C7</b></p>	<p>50</p>  <p>L clamp profile [26 x 12.3 mm]</p> <p><b>B2</b></p>
<p>3 m 6 m</p>  <p>C profile [for flat steel 40 x 10]</p> <p><b>C17</b></p>	<p>50</p>  <p>L clamp profile</p> <p><b>B2a</b></p>
<p>3 m 6 m</p>  <p>C profile [for flat steel 40 x 8]</p> <p><b>C20</b></p>	<p>50 m</p>  <p>L clamp profile [21 x 9 mm]</p> <p><b>B6</b></p>
<p>6 m</p>  <p>C profile [for flat steel]</p> <p><b>C32</b></p>	<p>50 m 100 m</p>  <p>L clamp profile [8.6 x 6.3 mm]</p> <p><b>V1</b></p>
<p>3 m 50 m</p>  <p>Flat clamp profile</p> <p><b>B1</b></p>	<p>50 m</p>  <p>U clamp profile</p> <p><b>V7</b></p>
<p>50 m</p>  <p>Flat clamp profile</p> <p><b>B1a</b></p>	<p>50</p>  <p>U clamp profile</p> <p><b>V8</b></p>
<p>50 m</p>  <p>Flat clamp profile [21 x 9 mm]</p> <p><b>B8</b></p>	

**ALT SÜRTÜNME PROFİL ÇEŞİTLERİ**

<p>50 m 50 m</p> <p>Snap-on profile</p> <p><b>C2</b></p>	<p>50</p> <p>Bridge step profile [40 x 7.5 mm]</p> <p><b>W4</b></p>
<p>50 m 50 m</p> <p>Snap-on profile</p> <p><b>C3</b></p>	<p>6 m 50 m</p> <p>Bridge step profile [45 x 15 mm]</p> <p><b>W7</b></p>
<p>50 m 50 m</p> <p>Snap-on profile</p> <p><b>D2</b></p>	<p>50 m</p> <p>Z profile [20 x 8 mm]</p> <p><b>Z1</b></p>
<p>3 m</p> <p>Snap-on profile</p> <p><b>D3</b></p>	<p>50 m</p> <p>Z profile [23 x 9 mm]</p> <p><b>Z2</b></p>
<p>6 m</p> <p>Dogbone profile</p> <p><b>D1</b></p>	<p>3 m 6 m</p> <p>Mushroom profile</p> <p><b>P1</b></p>
<p>50 m</p> <p>L profile [20 x 5.5 mm]</p> <p><b>L1</b></p>	<p>Mushroom profile P4: A profile with a semi-circular top and a central hole. Dimensions: 14.1 (width), 160° (angle), 15.5 (height), 13.8 (base width), 3.0 (hole diameter), 9.5 (flange height), 4.5 (flange width), 1.5 (thickness).</p> <p><b>P4</b></p>
<p>50 m</p> <p>L profile [20 x 6 mm]</p> <p><b>L4</b></p>	<p>6 m</p> <p>U profile</p> <p><b>U23</b></p>
<p>50 m</p> <p>Step profile [40 x 6 mm]</p> <p><b>W1</b></p>	<p>Rail profile D6: A complex profile with multiple steps and radii. Dimensions: 80.0 (width), 68.0 (width), 40.5 (width), 25.0 (width), 50.0 (width), 6.5 (height), 1.0 (thickness), R6 (radius), 3.5 (flange height), 10.0 (flange height), 22.0 (total height).</p> <p><b>D6</b></p>
<p>50 m</p> <p>Step profile [40 x 5.5 mm]</p> <p><b>W5</b></p>	



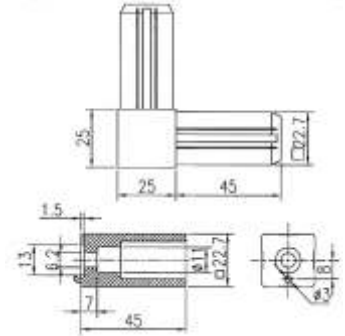
**880 TİP BANTLAR İÇİN  
DÖNÜŞ SETLERİ**



Zincir (mm)	Sıra	R (mm)	AG (mm)
82,5	1	500	100
114,5	1	610	130
190,5	1	610	200

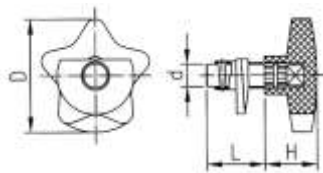
..... Doğrusal gidiş setleri de istek üzeri imal edilmektedir. ....

**BİRLEŞTİRME APARATLARI**



KOD	Adı	Malzeme
YY-M336	Tekli Birleştirme	Çelik Üzeri
YY-M337	İkili Birleştirme	Güçlendirilmiş
YY-M338	Üçlü Birleştirme	Plastik

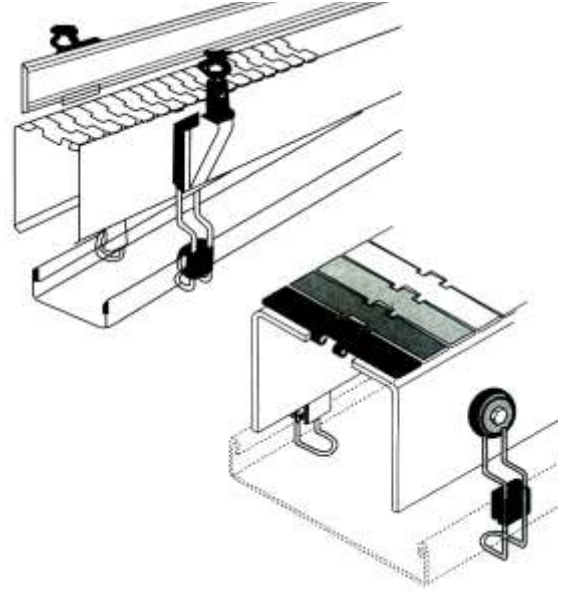
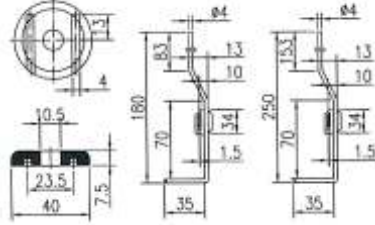
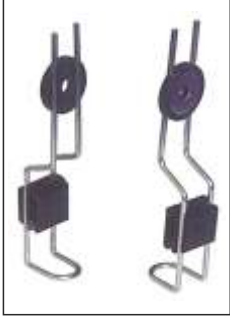
**YAYLI TOPUZ**



KOD	d	D	L	H
YY-G366	Ø 7	50	45	32
YY-G364	Ø 7	63	45	38

## ALT TAVA TAŞIYICILAR

### ALT TAVA TUTUCU



Kod	Tip	L
YY-T-390	Alt Tava	180
	Tutucu	250

**GALVENİZ-PASLANMAZ VE PVC BORU  
HAZIR RULO BAŞLIK UYGULAMALARI**



Serbest Salınım Rulo Başlıkları



Zincir Tahrikli Rulo Başlığı



Yuvarlak Kayış Tahrikli Rulo Başlığı



Plastik ABS Rulo Başlıkları



Metal Rulo Başlıkları



Yuvarlak Kayış Yuvalı  
Tahrikli Tip Rulolar

İstenilen çap ve boyda imal edilir.



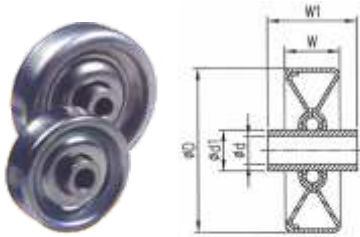
Tek Sıra Dişli  
Tahrik Rulo Başlığı



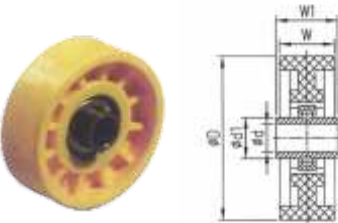
Çift Sıra Dişli  
Tahrik Rulo Başlığı



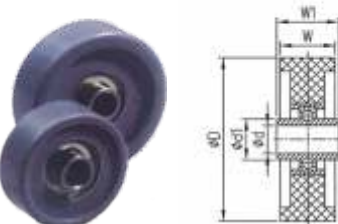
Yük Transfer Rulmanlar



Tip	d(mm)	d1(mm)	W(mm)	W1(mm)	D(mm)	Ağırlık (gr)	Yük K.(Kg)
Metal Teker	6.2	11	13	24	38	56	20
Rulo	8.2	12	16	26	48	66	25



Tip	d(mm)	d1(mm)	W(mm)	W1(mm)	D(mm)	Ağırlık (gr)	Yük K.(Kg)
Plastik Tip Teker Rulo	8.2	12	16	18	48	30	40



Tip	d(mm)	d1(mm)	W(mm)	W1(mm)	D(mm)	Ağırlık (gr)	Yük K.(Kg)
Plastik Tip	6.2	11	13	24	38	56	20
Teker Rulo	8.2	12	16	26	48	66	25

Tüm rulo başlıkları tane misket rulmanlıdır.

## RULO BAŞLIKLARI



### KTR SERİSİ (PLASTİK)

- 402028 KTR-16x1.0.00.6
- 402015 KTR-20x1.0.00.8
- 402005 KTR-30x1.0.0.10
- 402011 KTR-40x1,5.00.10
- 404103 KTR-50x1,5.02.12



### KTR SERİSİ (AĞIR)

- 409003 KTR-50x1,5.40.12
- 407022 KTR-60x1,5.30.12
- 410005 KTR-80x2.0.42.15
- 410009 KTR-80x3.0.42.15
- 410013 KTR-89x3.0.44.20



### DIŞLI SERİSİ (PLASTİK)

- 411002 KKR-1/2x5/16,Z17 50x1,5.4
- 412001 KKR-1/2,5/16,z=11 50x1,5/12 fix
- 412004 KKR-2,5/16,z=11.12 frictionel



### MTR SERİSİ (METAL)

- 421003 MTR-30x1,5.16.10
- 422002 MTR-40x1,520.08
- 422003 MTR-48x1,5.20.12
- 422004 MTR-50x1,5.20.12
- 422034 MTR-60x1,5.20.12



### LH SERİSİ (AĞIR TİP)

- 211029 LH-6204.20
- 211036 LH-6204/6303



### MTS SERİSİ (AĞIR TİP)

- 435049 MTS-63.5x2,9.46.20 zz
- 435015 MTS-80x2.0.44.17 zz
- 435068 MTS-80x3.0.44.17 zz
- 435063 MTS-89x3.0.47.25 zz
- 435046 MTS-108x3,25.47.25 zz



### KONİK RULO

- 1/30 MM
- 10/50 MM
- ARASI

